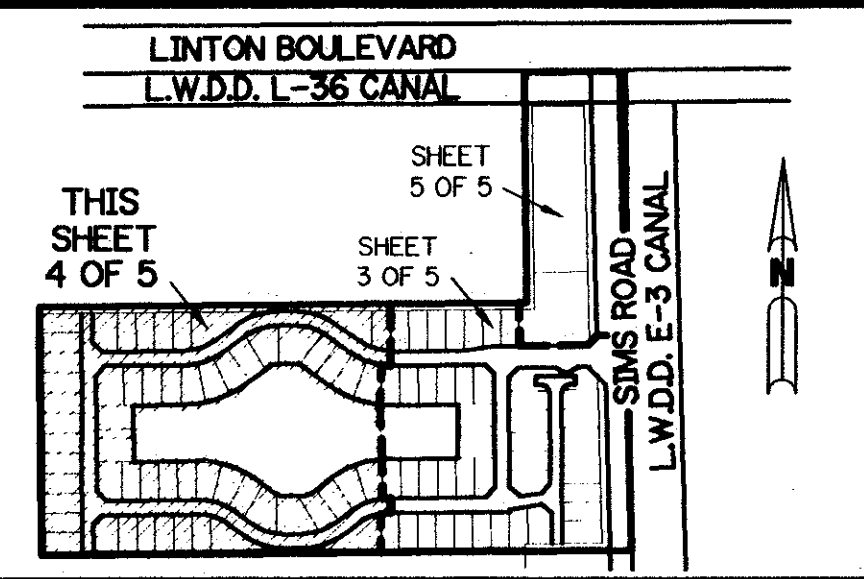


ADDISON TRACE P.U.D.

A PLANNED UNIT DEVELOPMENT
A PART OF THE LINTON P.U.D.
A PARCEL OF LAND LYING IN SECTION 26,
TOWNSHIP 46 SOUTH, RANGE 42 EAST,
PALM BEACH COUNTY, FLORIDA.

SHEET 4 OF 5 NOVEMBER, 1996

NOTE:
COORDINATES SHOWN ARE GRID COORDINATES
DATUM = NAD 83 (1990 ADJUSTMENT)
ZONE = FLORIDA EAST ZONE
LINEAR UNIT = U.S. SURVEY FEET
COORDINATE SYSTEM 1983 STATE PLANE
TRANSVERSE MERCATOR PROJECTION
ALL DISTANCES ARE GROUND
SCALE FACTOR = 1.000034
PLAT BEARING = GRID BEARING (NO ROTATION)

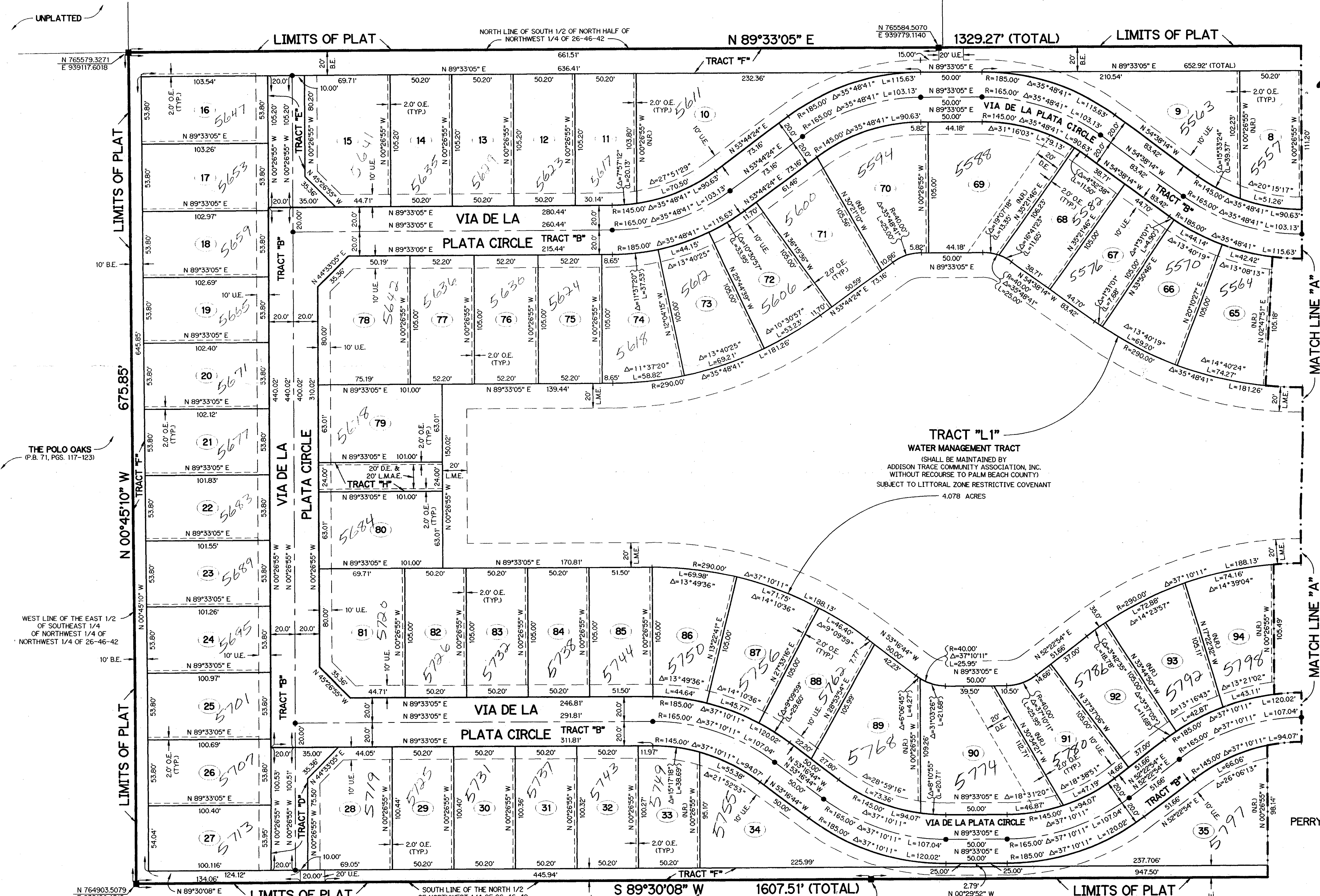


KEY MAP
N.T.S.

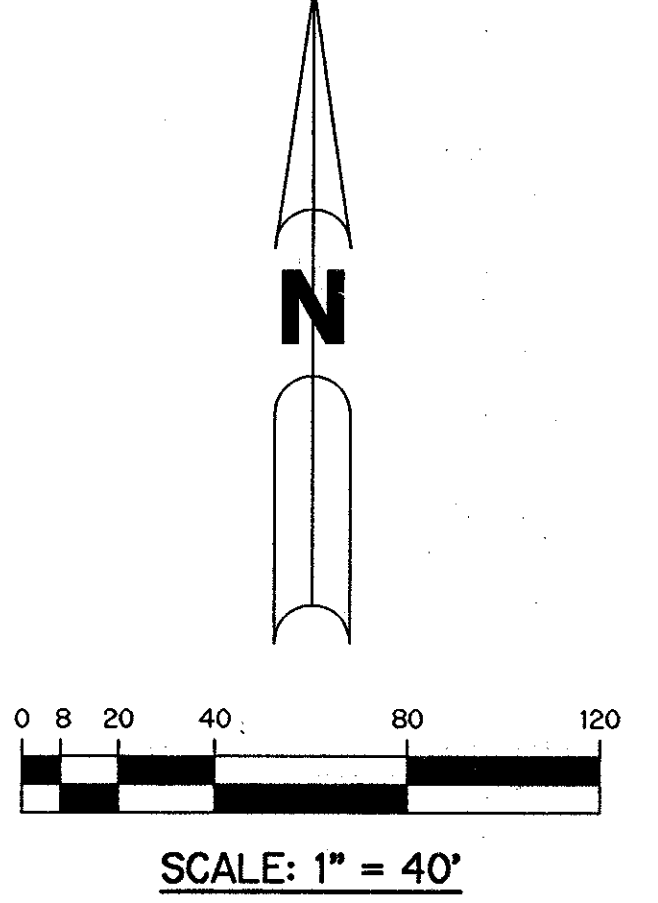
BOYSTOWN, CL.F.
(P.B. 68, PGS. 92 & 93)

UNPLATTED

UNPLATTED



PET. 94-12
5/3/3/K



- LEGEND:
- - PERMANENT REFERENCE MONUMENT, PLS #4213
 - - PERMANENT CONTROL POINT, PLS #4213
 - Δ - DELTA ANGLE
 - BE - BUFFER EASEMENT
 - CE - CENTERLINE
 - DE - DRAINAGE EASEMENT
 - LE - LAKE MAINTENANCE EASEMENT
 - L.A.E. - LIMITED ACCESS EASEMENT
 - L.M.A.E. - LAKE MAINTENANCE ACCESS EASEMENT
 - L.M.E. - LAKE MAINTENANCE EASEMENT
 - L.W.D.D. - LAKE WORTH DRAINAGE DISTRICT
 - NR - NOT RADIAL
 - N.T. - NOT TANGENT
 - N.T.S. - NOT TO SCALE
 - O.E. - OVERHANG EASEMENT
 - O.R.B. - OFFICIAL RECORD BOOK
 - O.S. - OPEN SPACE
 - P.B. - PLAT BOOK
 - PGS. - PAGES
 - PLS. - PROFESSIONAL LAND SURVEYOR
 - P.S.M. - PROFESSIONAL SURVEYOR AND MAPPER
 - P.U.D. - PLANNED UNIT DEVELOPMENT
 - R - RADIUS
 - RAW - RIGHT-OF-WAY
 - S.T. - SURVEY TIE
 - U.E. - UTILITY EASEMENT
 - N 737648.0171 E 905258.2326 - DENOTES STATE PLANE COORDINATES

SUBDIVISION - ADDISON TRACE
BOOK 80 PAGE 129
FLOOD ZONE 6
QUAD # 37
ZIP CODE 33475

THE POLO OAKS
(P.B. 71, PGS. 117-123)

WEST LINE OF THE EAST 1/2
OF SOUTHEAST 1/4
OF NORTHWEST 1/4 OF
NORTHWEST 1/4 OF 26-46-42

N 764903.5079
E 939126.4815

THE POLO OAKS
(P.B. 71, PGS. 117-123)

N 764908.7211
E 939726.4753

THE POLO OAKS
(P.B. 71, PGS. 117-123)

THIS INSTRUMENT PREPARED BY
PERRY C. WHITE, P.S.M. 4213, STATE OF FLORIDA
LAWSON, NOBLE AND WEBB, INC.
ENGINEERS PLANNERS SURVEYORS
WEST PALM BEACH, FLORIDA

0671-001

80/129
SHEET 4 OF 5